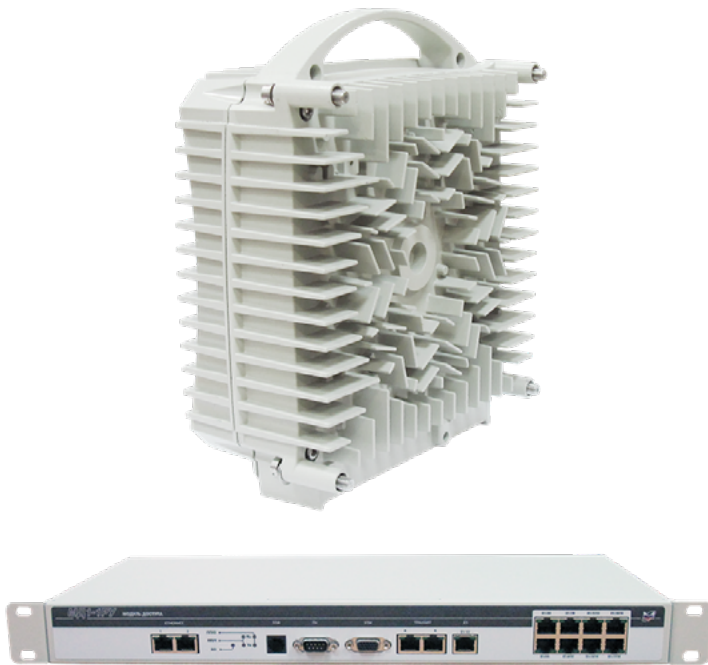


## farLink



**400 MHZ**  
OPERATION ON SEMI-  
CLOSED INTERVALS

**MINIMUM LOAD ON STATION**  
**SUPPORTS**  
LOG-PERIODIC ANTENNAS

**LIGHTNING PROTECTION**  
OPTICAL ODU-IDU CABLE

**CAPACITY UP TO 8/16 MBPS**

**INTERFACES**  
**4 × E1 + 2 × FE**

**TRANSPARENT**  
**TRANSMISSION**

The radio relay system farLink provides communication at long or semi-closed paths for remote, hard-to-reach areas with undeveloped infrastructure at shortest time with minimal expenses

Log-period antenna arrays create minimal wind load on bearing pads. Their wide radiation pattern reduces the requirements for pad rigidity and the laboriousness of installation and alignment.

Transceivers are installed in vicinity of an antenna, eliminating the transmission loss of the RF signal. Optical cable provides unprecedented lightning protection for internal equipment and eliminates EMC problems with feeders of other radio systems.

The function of partial traffic reservation (PDT) allows to transmit priority traffic in 1 + 1 mode, while the rest of the traffic is broadcasted in 2 + 0 mode. This ensures reliable data transmission while increasing the system bandwidth.

## SPECIFICATIONS

Frequency range, MHz	<b>394...410 / 434...450</b>
Bandwidth, MHz	1.86
Frequency tuning	programmed with 5 kHz step
System configuration	1 + 0 / 1 + 1 SD <sup>1</sup> / FD <sup>2</sup> , 2 + 0 PRT <sup>3</sup>
Interface	up to 4 × E1 + 2 × Ethernet 10/100
Service channels	service line (FXS)
Functional check	Indicating lights, Master M special software
Monitoring / control of external devices	8 outputs / 8 inputs
Monitoring and control (interface)	Master M special software, web utility Fluto (USB, Ethernet)

## Transmit-receiver

Modulation	QPSK	8QAM	16QAM	32QAM	64QAM
Transmitter output power, dBm	35	33	32	30	29
Capacity, Mbps	2.2	3.5	4.7	7.0	8.4
Receiver sensitivity at BER = 10 <sup>-6</sup> , dBm	-96	-93	-90	-84	-81

## Other

	ODU	IDU
Power consumption, W	45	10
Power supply, V	-39... -72	-39... -72
Operating temperature range, °C	-50... +50	-5... +45
Dimensions, mm	264 × 370 × 125	480 × 44 × 240 (19", 1U)
Weight, kg	7.2	3

## Drop cable

	ODU-IDU cable	ODU power cable
Cable type	Optical	Electrical
Cable cross section, mm <sup>2</sup>	2 optical SMF	2 × 1.5 / 2 × 2.5 / 2 × 4

## Antennas

	Antenna array		
	Two Z-series radiators	Two log-periodic antennas	Four log-periodic antennas
Gain, dBi	14	14	17
Dimensions, mm	1050 × 1050 × 200	682 × 1340 × 380	1570 × 680 × 1340
Weight, kg	10.5	5.5	14

<sup>1</sup> SD (Spatial Diversity). — <sup>2</sup> FD (Frequency Diversity). — <sup>3</sup> PRT (Protected Traffic is transmitted according to N+1 scheme)